

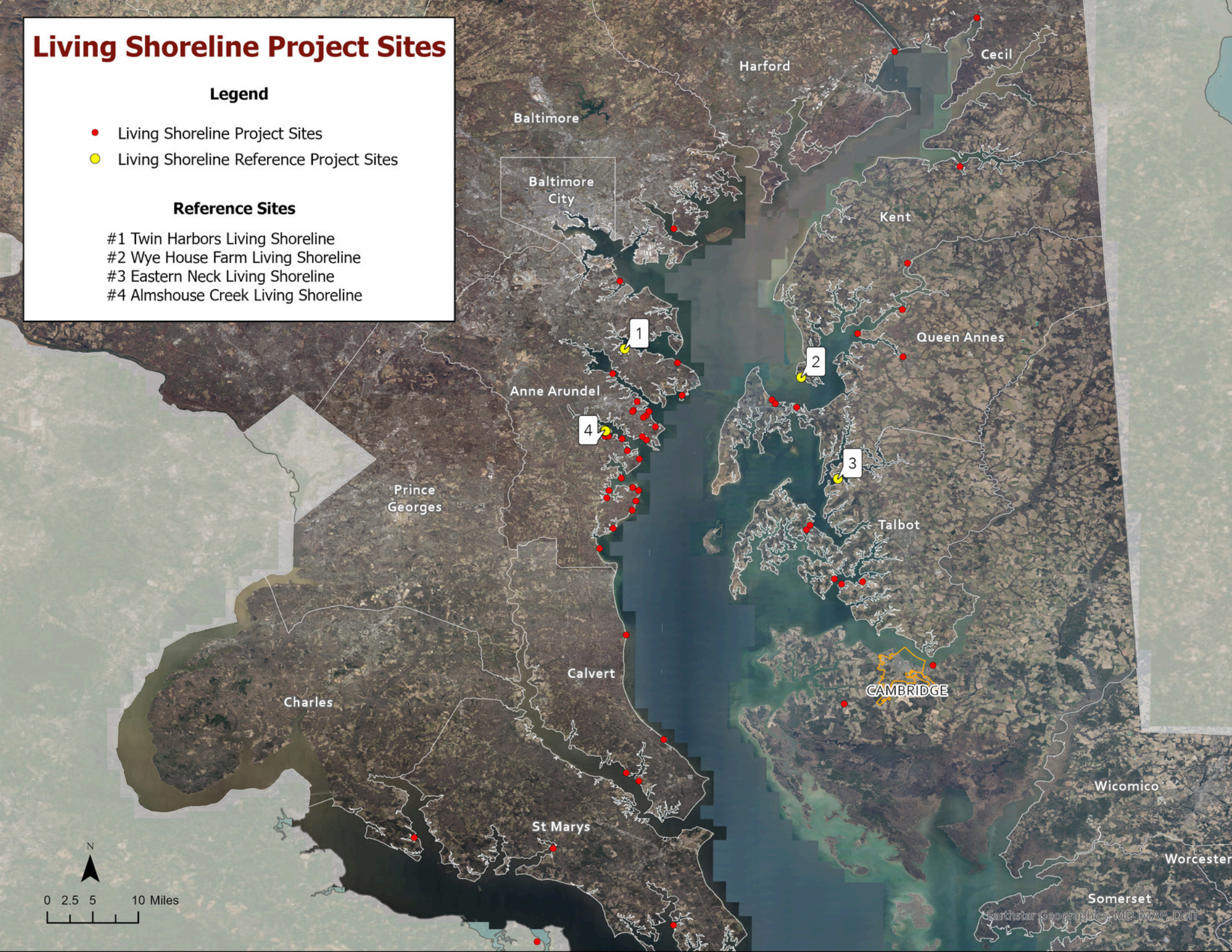
# Living Shoreline Project Sites

## Legend

- Living Shoreline Project Sites
- Living Shoreline Reference Project Sites

## Reference Sites

- #1 Twin Harbors Living Shoreline
- #2 Wye House Farm Living Shoreline
- #3 Eastern Neck Living Shoreline
- #4 Almshouse Creek Living Shoreline





# LIVING SHORELINE REFERENCE SITES



BEFORE



AERIAL OF REVENTMENT



AERIAL OF BREAKWATERS



AERIAL OF THE 3 SITES



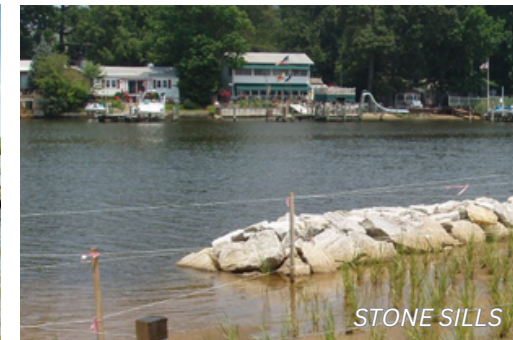
AFTER



SHORELINE



ROCK WALL



STONE SILLS

## #1 TWIN HARBORS LIVING SHORELINE 181 BAYBOURNE DR., ARNOLD, MD 21012 (ANNE ARUNDEL COUNTY)

Faced with a failing bulkhead, the community worked with South River Federation to replace approximately 390 linear feet of existing bulkhead with a living shoreline along Mill Creek of the Magothy River. Additionally, this project includes a 4,200 square foot bioretention facility located between a parking lot and the shoreline to capture runoff, as well as 0.25 acres of voluntary reforestation. A dense native planting and use of woody debris helped achieve new habitat zones to support a variety of Bay flora and fauna.

For more information, visit:  
[Chesapeake Bay Trust Project Highlight: Twin Harbors Living Shoreline](#)



## #2 WYE HOUSE FARM LIVING SHORELINE 26080 BRUFFS ISLAND RD, EASTON, MD 21601 (TALBOT COUNTY)

The Tilghman family has owned 1,200 acres of land that is home to miles of shoreline on the Wye River, Lloyds Creek and Shaw Bay and the property is losing acres each year. The family has been working on building living shorelines to protect their fields and the Bay. The site has been used as a demonstration for education and outreach and has Interpretive signs that were installed on site. A brochure, open house visits and workshops are tools that have been used to share information about this living shoreline.

For more information, visit:  
[Chesapeake Bay Program With conservation, a 12th-generation Maryland family holds on to its historic property](#)



## #3 EASTERN NECK LIVING SHORELINE EASTERN NECK ISLAND RD, ROCK HALL, MD 21661 (KENT COUNTY)

The Eastern Neck Living Shoreline refers to a restoration project at the Eastern Neck National Wildlife Refuge in Rock Hall, Maryland, that uses a combination of engineered structures and natural materials to protect the shoreline from erosion and enhance habitat for wildlife. The project involves building artificial breakwaters, creating oyster reefs and marsh grass plantings to stabilize the banks and provide habitat for fish, birds, and other species.

For more information, visit:  
[USACE Eastern Neck Wildlife Refuge Public Notice](#)



## #4 ALMSHOUSE CREEK LIVING SHORELINE SHORE DR, EDGEWATER, MD 21037 (ANNE ARUNDEL COUNTY)

There are 3 separate living shoreline projects located along Shore Drive. Each one involved London Towne Property Owner's Association obtaining funding to create living shorelines along approximately 1,400 linear feet of severely eroding shorelines. The projects included constructing segmented stone sills filled with sand and planted with native wetland vegetation.

For more information, visit:  
[NOAA Fisheries Living Shorelines -](#)  
Site 1: Almshouse Creek Living Shoreline  
Site 2: Londontowne Phase 4 Living Shoreline  
Site 3: Almshouse Creek Living Shoreline





## LIVING SHORELINE REFERENCE SITES CONTINUED



BREAKWATERS AND NATIVE PLANTINGS



HABITAT ENHANCEMENT



MARSH PLANTING WITH SAND INFILL



BREAKWATERS



BREAKWATER INSTALLATION



WOODY DEBRIS FEATURES



HOOKEED MUSSELS ON RIBBON REEF



MARSH PLANTINGS

### #1 TWIN HARBORS LIVING SHORELINE

- 4,200 square foot bioretention facility located between a parking lot and the shoreline to capture runoff
- 0.25 acres of voluntary reforestation
- Dense native planting and use of woody debris helped achieve new habitat zones to support a variety of Bay flora and fauna.

For more information, visit:  
Severna Park Voice: [Twin Harbors Builds A Stronger Coastline And Community](#)



[MDE Site Location: AA 66 - Mill Creek](#)



### #2 WYE HOUSE FARM LIVING SHORELINE

- 3,400 linear feet of shoreline restoration
- Low-profile stone sill with sand placed behind it
- Native marsh vegetation
- Woody debris features
- Habitat creation
- Restored forested wetland habitat

For more information, visit:  
[Chesapeake Bay Program Instagram Post](#)

[NOAA Fisheries Living Shorelines](#)



### #3 EASTERN NECK LIVING SHORELINE

- Low headland breakwaters placed at each end of Hail Cove maintain the pocket beach
- A long ribbon reef deemed the “arc of stone” stretches across the cove, offering further protection for the beach and vital habitat for fish, shellfish and invertebrates
- 11 patch reefs—using one acre of material in all—were laid down over the two and a half-acre cove

For more information, visit:  
[Chesapeake Bay Program Artificial reefs slow erosion, build habitat on Chester River](#)



### #4 ALMSHOUSE CREEK LIVING SHORELINE

Site 1: Almshouse Creek Living Shoreline

- Segmented stone sills and sand containment structures were constructed with sand planted with native vegetation behind it

Site 2: Londontowne Phase 4 Living Shoreline

- Segmented stone sills filled with sand and planted with native wetland vegetation

Site 3: Almshouse Creek Living Shoreline

- Five stone sills were constructed and backfilled with sand. Planted salt marsh vegetation on the sand, and a vegetated buffer.

For more information, visit:  
[NOAA Fisheries Living Shorelines](#)

