

Make Cambridge Resilient

Public Meeting

Please join us!

Talk Openly, Share Your
Ideas & Ask Questions



THURSDAY,
SEPTEMBER 4, 2025

at Council Chambers
305 Gay Street
6:00pm - 7:30pm

Topic of Discussion:
**FLOOD MITIGATION
PROJECT - LONG
WHARF PARK AREA**

www.makecambridgeresilient.org

Thank you for joining us!



**MAKE CAMBRIDGE
RESILIENT**

WWW.MAKECAMBRIDGERESILIENT.ORG

LONG WHARF PARK AREA



WELCOME

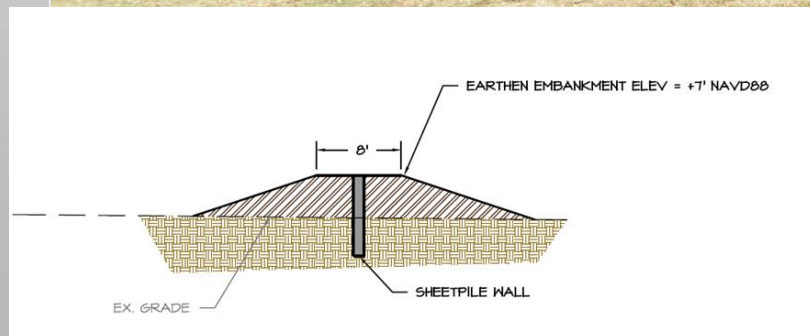


**LARRY WHITE,
PROJECT
MANAGER**

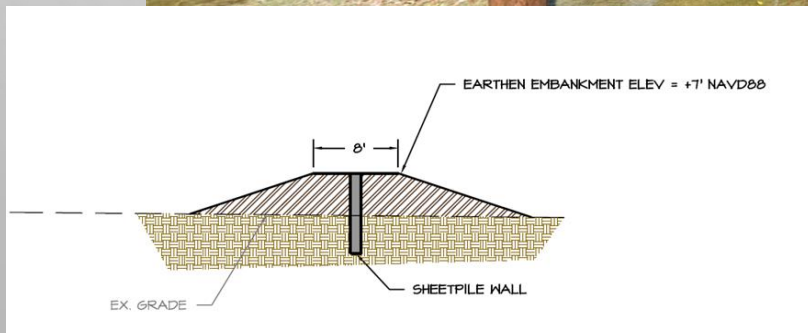
AGENDA

- Follow-up to Long Wharf Areas Questions & Comments – Megan Barniea, P.E., Senior Project Manager, BayLand Consultants & Designers, Inc.
- Representative Sites -

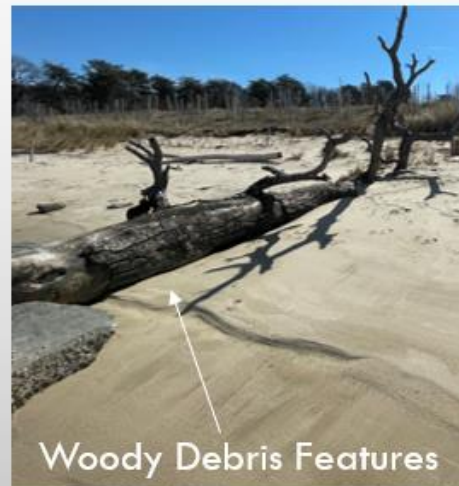
LONG WHARF PARK BERM



LONG WHARF PARK BERM



LONG WHARF PARK REPRESENTATIVE HABITAT



LIVING SHORELINES EXAMPLES & REFERENCE SITES

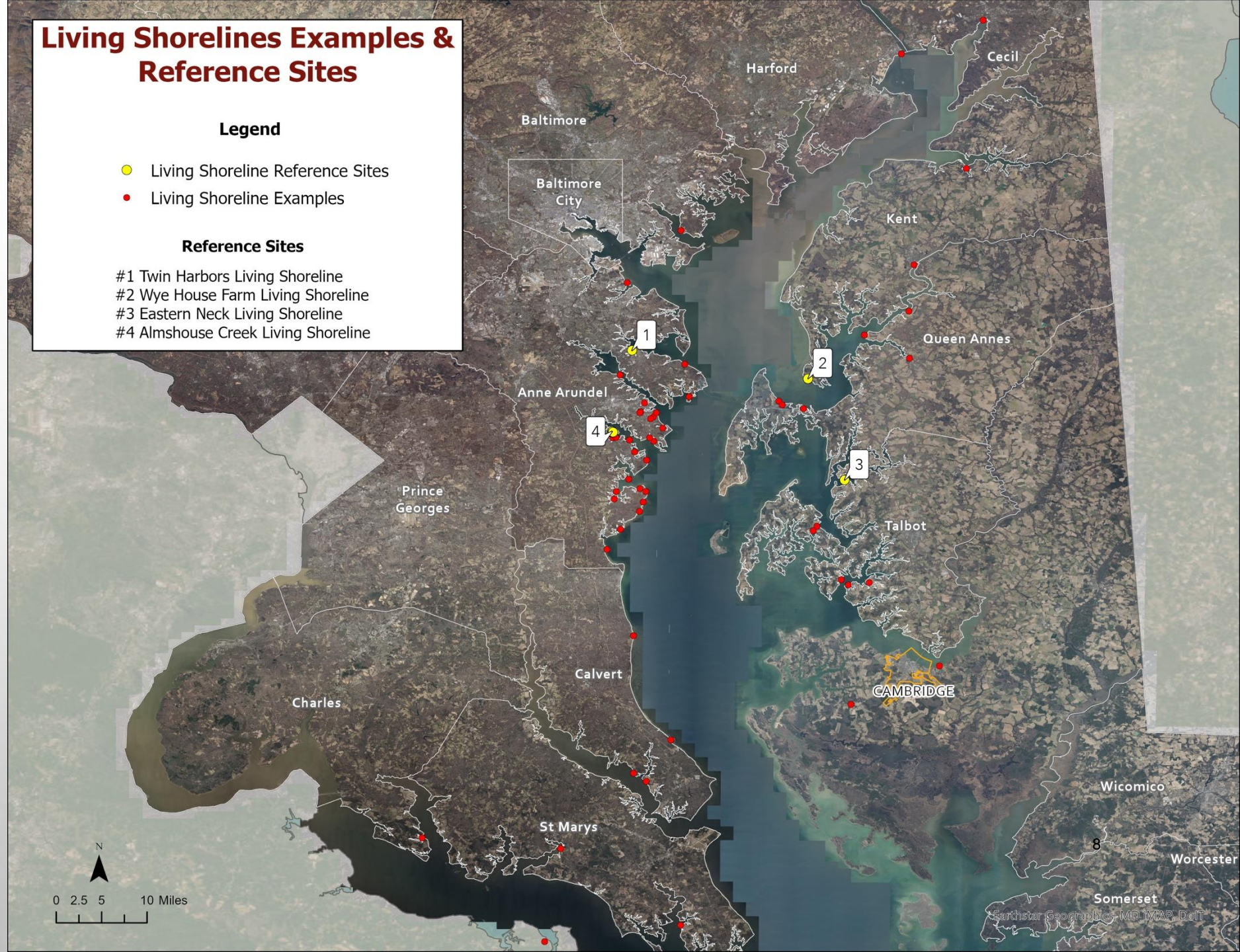
Living Shorelines Examples & Reference Sites

Legend

- Living Shoreline Reference Sites
- Living Shoreline Examples

Reference Sites

- #1 Twin Harbors Living Shoreline
- #2 Wye House Farm Living Shoreline
- #3 Eastern Neck Living Shoreline
- #4 Almshouse Creek Living Shoreline



LIVING SHORELINE REFERENCE SITES



BEFORE



AERIAL OF REVENTMENT



AERIAL OF BREAKWATERS



AERIAL OF THE 3 SITES



AFTER



SHORELINE



ROCK WALL



STONE SILLS

#1 TWIN HARBORS LIVING SHORELINE 181 BAYBOURNE DR., ARNOLD, MD 21012 (ANNE ARUNDEL COUNTY)

Faced with a failing bulkhead, the community worked with South River Federation to replace approximately 390 linear feet of existing bulkhead with a living shoreline along Mill Creek of the Magothy River. Additionally, this project includes a 4,200 square foot bioretention facility located between a parking lot and the shoreline to capture runoff, as well as 0.25 acres of voluntary reforestation. A dense native planting and use of woody debris helped achieve new habitat zones to support a variety of Bay flora and fauna.

For more information, visit:
[Chesapeake Bay Trust Project Highlight: Twin Harbors Living Shoreline](#)



#2 WYE HOUSE FARM LIVING SHORELINE 26080 BRUFFS ISLAND RD, EASTON, MD 21601 (TALBOT COUNTY)

The Tilghman family has owned 1,200 acres of land that is home to miles of shoreline on the Wye River. Lloyds Creek and Shaw Bay and the property is losing acres each year. The family has been working on building living shorelines to protect their fields and the Bay. The site has been used as a demonstration for education and outreach and has interpretive signs that were installed on site. A brochure, open house visits and workshops are tools that have been used to share information about this living shoreline.

For more information, visit:
[Chesapeake Bay Program With conservation, a 12th generation Maryland family holds on to its historic property](#)



#3 EASTERN NECK LIVING SHORELINE EASTERN NECK ISLAND RD, ROCK HALL, MD 21661 (KENT COUNTY)

The Eastern Neck Living Shoreline refers to a restoration project at the Eastern Neck National Wildlife Refuge in Rock Hall, Maryland, that uses a combination of engineered structures and natural materials to protect the shoreline from erosion and enhance habitat for wildlife. The project involves building artificial breakwaters, creating oyster reefs and marsh grass plantings to stabilize the banks and provide habitat for fish, birds, and other species.

For more information, visit:
[USACE Eastern Neck Wildlife Refuge Public Notice](#)



#4 ALMSHOUSE CREEK LIVING SHORELINE SHORE DR, EDGEWATER, MD 21037 (ANNE ARUNDEL COUNTY)

There are 3 separate living shoreline projects located along Shore Drive. Each one involved London Towne Property Owner's Association obtaining funding to create living shorelines along approximately 1,400 linear feet of severely eroding shorelines. The projects included constructing segmented stone sills filled with sand and planted with native wetland vegetation.

For more information, visit:
[NOAA Fisheries Living Shorelines](#)
Site 1: Almshouse Creek Living Shoreline
Site 2: Londontowne Phase 4 Living Shoreline
Site 3: Almshouse Creek Living Shoreline



HANDOUT

EASTERN SHORE: LIVING SHORELINE REFERENCE SITES

Wye House Farm Living Shoreline

- Replaced approximately 390 linear feet of existing bulkhead with a living shoreline along Mill Creek of the Magothy River. Installed a 4,200 square foot bioretention facility located between a parking lot and the shoreline to capture runoff, as well as 0.25 acres of voluntary reforestation. Developed a dense native planting area and used woody debris to help achieve new habitat zones.



Almshouse Creek Living Shoreline

- There are 3 separate living shoreline projects located along Shore Drive. Each one involved London Towne Property Owner's Association obtaining funding to create living shorelines along approximately 1,400 linear feet of severely eroding shorelines. The projects included constructing segmented stone sills filled with sand and planted with native wetland vegetation.



ANNE ARUNDEL COUNTY: LIVING SHORELINE REFERENCE SITES

Twin Harbor Living Shoreline

- Replaced approximately 390 linear feet of existing bulkhead with a living shoreline along Mill Creek of the Magothy River. Installed a 4,200 square foot bioretention facility located between a parking lot and the shoreline to capture runoff, as well as 0.25 acres of voluntary reforestation. Developed a dense native planting area and used woody debris to help achieve new habitat zones.



Almshouse Creek Living Shoreline

- There are 3 separate living shoreline projects located along Shore Drive. Each one involved London Towne Property Owner's Association obtaining funding to create living shorelines along approximately 1,400 linear feet of severely eroding shorelines. The projects included constructing segmented stone sills filled with sand and planted with native wetland vegetation.



Q & A SESSION

NEXT STEPS

- MEETING NOTES POSTED TO PROJECT WEBSITE
- 30% DESIGN PUBLIC MEETING – SEPTEMBER 9, 2025
- 60% DESIGN – FALL/WINTER 2025
 - STAKEOUT OF BERM HEIGHT AND FOOTPRINT WILL BE PERFORMED DURING THIS TIMEFRAME